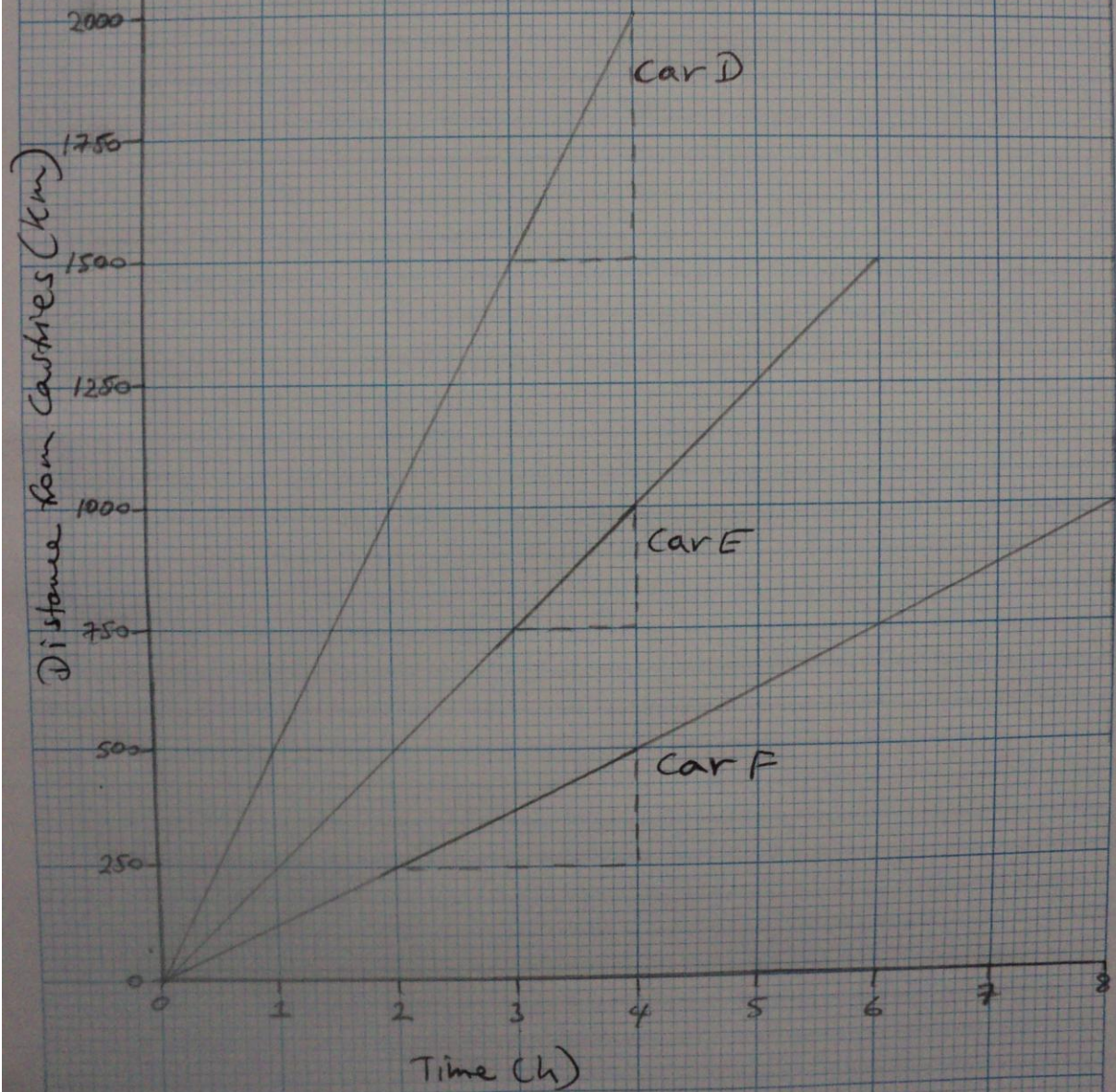


Travel graph for Cars D, E and F



Cars D, E and F leave Castries at the same time. They travel 1000 km to Laborie. Their journeys are shown above.

Answer the following questions using the graph above.

- a) How long did car D take to get to Laborie?
- b) How long did car E take to get to Laborie?
- c) How long did car F take to get to Laborie?
- d) Use the dotted lines to get the average speed of each car
- e) When car D reached Laborie how far behind was car E and F
- f) After 1 hour, how far was each car from Laborie?
- g) After 2 hours how far apart were the cars D and F?
- h) How long did it take each car to travel the first 200km?
- i) Assuming that car D, E and F continue along their same path how long will it take each car to reach 2000 km?